

Mitutoyo Quick Guide to Surface Roughness

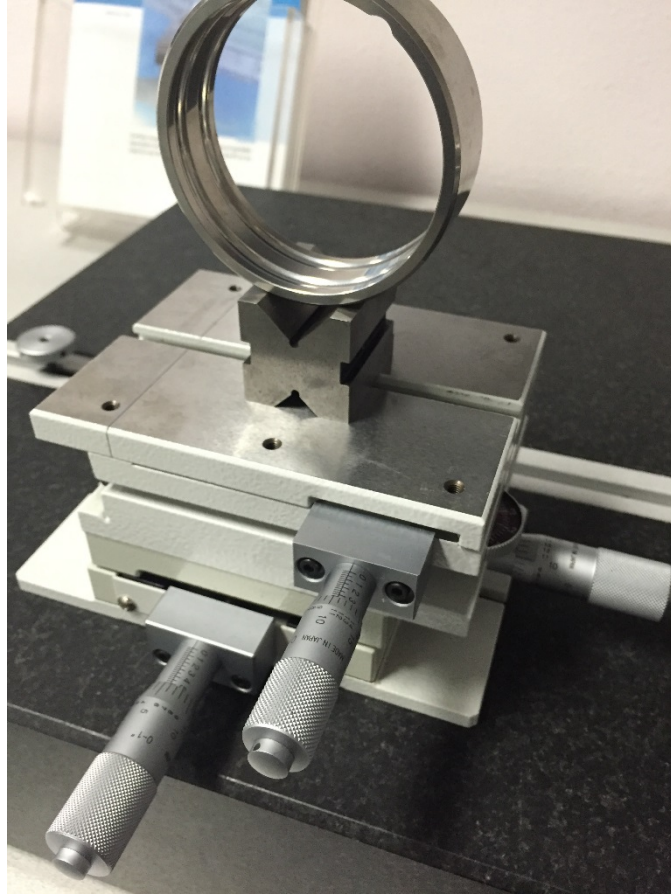
7 Ways to Increase Roughness Measurement Efficiency

1. Multiple workpiece batch measurement*



Mitutoyo Y-axis table enables efficient, automatic measurement of multiple aligned workpieces and multiple points on a single measurement surface. *Y-axis tables are compatible with Mitutoyo CV, SV, SV-C, and CS models. *These descriptions are Mitutoyo specific. Can the descriptions be made more general? Educate the customer first rather than selling.*

2. 3-axis adjustment table

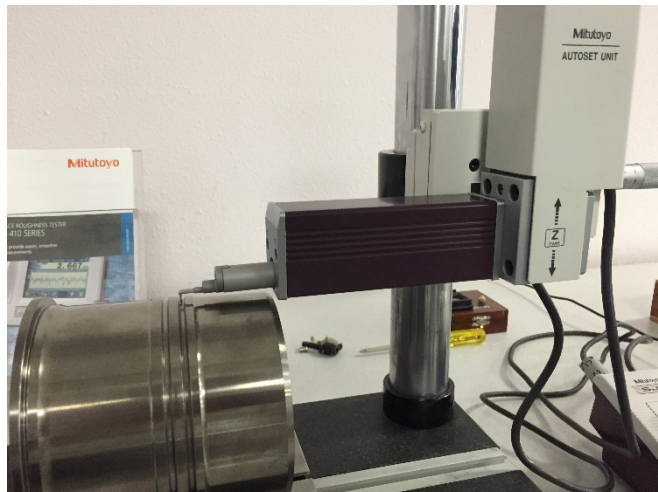


Mitutoyo offers manual, digital, and automatic leveling tables that quickly and accurately level your flat or cylindrical workpiece.

3. Fixtures

- a. Fixturing parts large and small with a chuck, clamp, or vice allows the operator to quickly and efficiently load parts for improved repeatability.

4. Column Stand

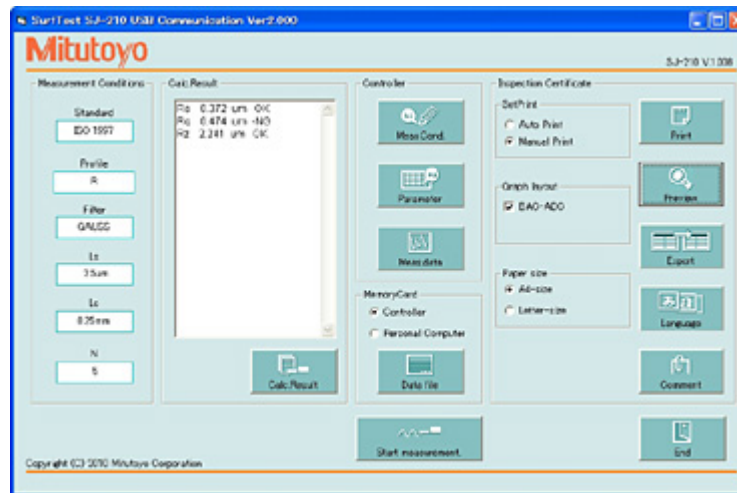


Auto-set unit, tilting adjustment unit, X-axis adjustment unit,

5. Wireless output with U-WAVE

- a. All digital Mitutoyo equipment can transfer its data to a PC via cable or wireless connection. A U-WAVE transmitter can be attached to your gage to wirelessly send data to Excel or SPC software such as MeasurLink.

6. Free SJ Software



- a. Set parameters, print report in excel, set speeds, and cutoffs all for free.

7. Process control

- a. Checking surface roughness can indicate tool wear on mills, lathes, grinders, and honing and lapping operations.